

GPS / SIGFOX TRACKER MODEL C - Beehives

(((CAPTURS®



Technical Characteristics

• Technical Characteristics

- Weight : 60g.
- Size : 87 x 57 x 24 mm.
- Sigfox coverage : <http://www.sigfox.com/coverage> - Possibility to install local connectivity / coverage.
- Power supply : Non rechargeable CR123 lithium battery.
- Ultra high autonomy radio transceiver on Low-Power-Wide-Area-Network SIGFOX.
- Data recording: Path and GPS data recorded in the tracker for offline export (max precision 1 position/20s) - **option**.
- Auto sync of recorded data with the cloud (Capturs Connect) - **option**.
- Operates in the following Sigfox Zone 1 countries :
Austria, Belgium, Botswana, Bulgaria, Cote d'Ivoire, Croatia, Czech Republic, Denmark, Estonia, Finland, France, French Guiana, Germany, Greece, Guadeloupe, Hungary, Ireland, Italy, Kenya, Latvia, Liechtenstein, Lithuania, Luxembourg, Malta, Martinique, Mauritius, Mayotte, Netherlands, New Caledonia, Nicaragua, Nigeria, Norway, Oman, Poland, Portugal, Reunion, Romania, Saint Lucia, Saudi Arabia, Senegal, Serbia, Slovakia, Slovenia, South Africa, Spain, Swaziland, Sweden, Switzerland, United Arab Emirates, United Kingdom.
- Movement detection through 3 axis accelerometer.
- Alerts: custom Email / SMS alerts (movement, geofencing, temperature, batterie...).
- Temperature sensor.
- Bulk alerts setup from CSV file.
- Export format : .GPX, .CSV.
- API: allows using raw data from the tracker in a third party system.
- Beacon system for indoor positioning - **option**
- NFC tag for identification - **option**
- Not jammable and not detectable.

Battery life

- Battery life

Use	Medium battery life
1 position per day	3.5 years
In motion 1 hour per day	1 year
In motion 6 hours per day	2 months

The autonomy may vary depending on the weather conditions and the position (indoor or outdoor).

Features

• Features



GPS / Radio Live Tracking

Live positions are sent on internet every 10 minutes (trace precision 1 position / 3 min). Follow trackers on Capturs SaaS platform desktop or mobile. Triple geolocation system : GPS ; Sigfox Atlas radio triangulation ; local beacon (option).



SIGFOX Network

Capturs relies on the Ultra-Narrow-Band Sigfox network and works without any infrastructure. Sigfox deploys a worldwide low-power network dedicated to Internet of Things, offering ultra high autonomy and low operating costs.



Beacon for indoor tracking

Deep indoor tracking without GPS with the exclusive Capturs beacon system, allowing to track people indoor with 5 m accuracy (option).



Autonomy

From several weeks to several months, depending on your activities and on the GPS settings. Email is sent when battery is low.



Data Export

Positions and tracks are recorded in the tracker (up to 1 point / 20 sec) for offline export on .GPX format (option).



Auto Sync

Data recorded in the tracker are automatically synchronized with Capturs SaaS platform by plugging it into the computer or over-the-air (option).



Size / Weight

87 x 57 x 24 mm, 60 grams.



API

Use the raw data sent by Capturs tracker on a third-party system (ERP, mapping system...) using the Capturs Rest API.



Customizable casing

Possibility of manufacturing on purpose enclosure, adapted to specific products form factors or to the regulatory requirements (ATEX...).



Temperature / Altitude

The tracker has a built-in temperature sensor and records all temperatures, useful for cold chain monitoring. Altitude is also provided using the GPS.



No infrastructure needed

Capturs is standalone and easy to use. No phone, no SIM card or no synchronization needed.



Typical Usecases

Beehives tracking, returnable Assets tracking (pallets, crates, cylinders...), fleet monitoring, industrial tooling management, leasing...

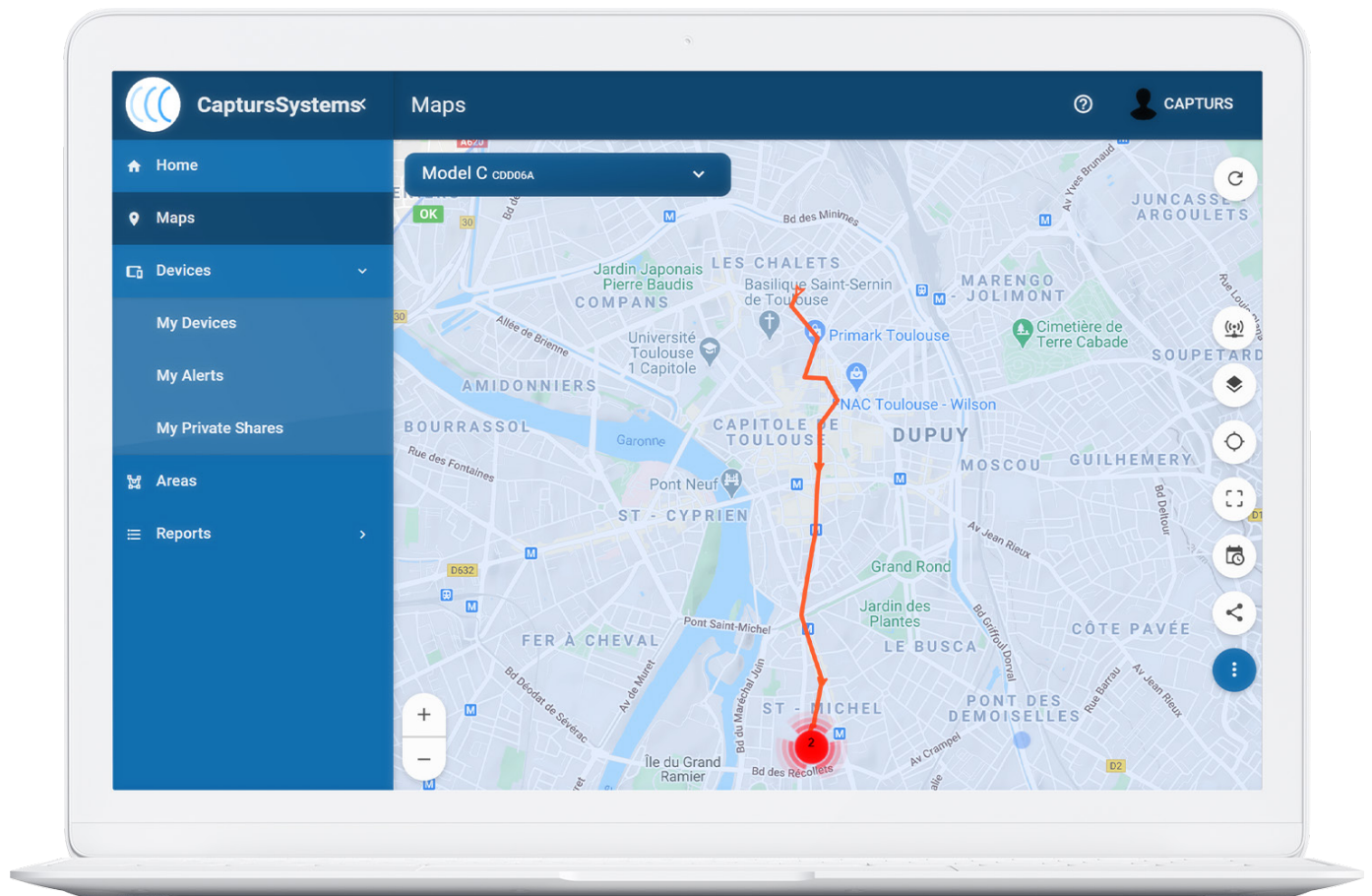
Certifications

• Certifications

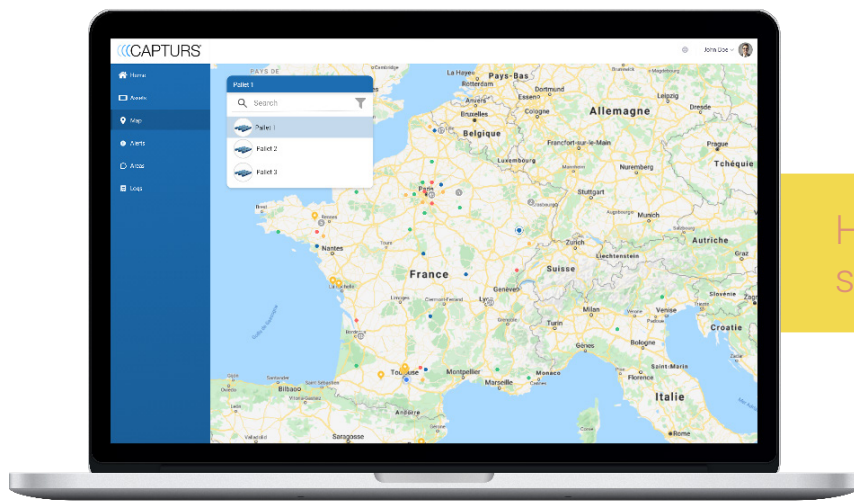


Online platform

- Online platform

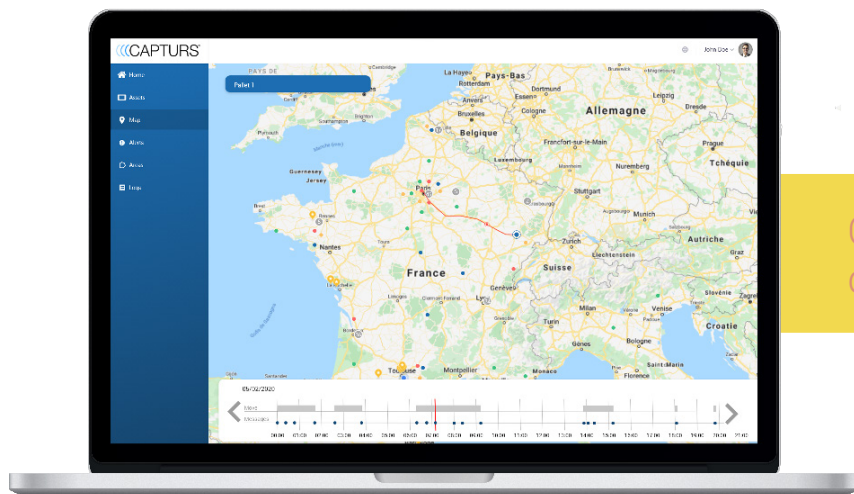
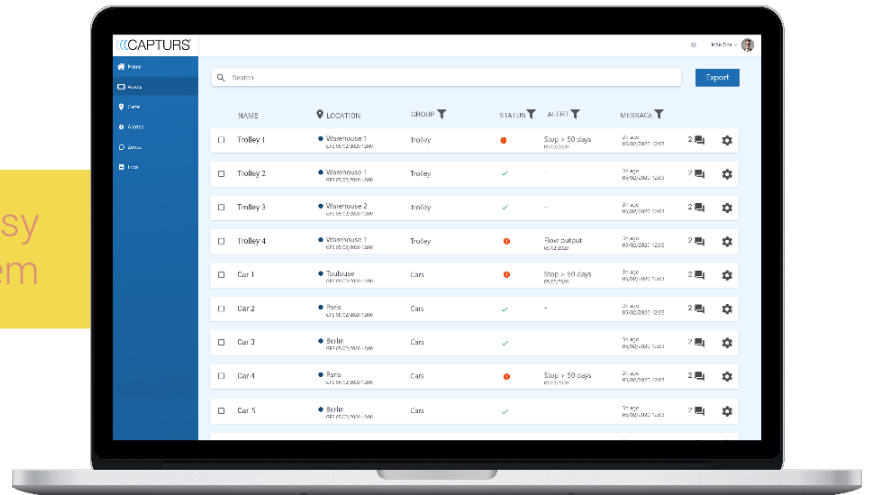


Real-time map and dashboard



History with
smart timeline

Easy
search system



Custom
dashboards

Smart geofencing
system

