

GPS / GSM Tracker  
LTE-M / NB IoT / 2G / 3G / 4G

**PERFORMANCE**

(((CAPTURS®



# Technical Characteristics

## • Technical characteristics

- Weight: 93g.
- Size: 39x26x77 mm.
- Power supply: rechargeable battery Li-Polymer.
- Battery capacity: 2600mAh.
- USB Type-C port.
- Splash-proof: IPX5
- Network: GSM / LTE Cat M1/NB1 / EDGE / GPRS / 2G Fallback (Multi-operator SIM card provided on request).
- Tracking frequency can be set remotely.
- Up to 5 years of autonomy (depending on the settings applied).
- Emergency alert button.
- Automatic synchronisation of recorded data with the Capturs cloud.
- NFC tag for identification - optional.
- Motion detection with a 3-axis accelerometer.
- Alerts: personalised alerts by email / SMS (movement, zones, battery...).
- Temperature sensor.
- Configuration of alerts in batch from a CSV file.
- Export format: .GPX, .CSV.
- API: allows the raw data from the tracker to be used in a third party system.

# Features

## • Features



### **GPS / Radio live tracking**

Live positions are sent at the programmed frequency (from a few seconds to several hours). Track the trackers on the Capturs SaaS platform, on your computer or on your Android / iOS mobile application. Geolocation system: GPS + cellular radio triangulation.



### **Cellular GSM Network - LTE-M / NB IoT\* / 2G / 3G / 4G**

\*LTE-M / NB IoT: depending on your operator's coverage

The best coverage in the world. The combination of GSM networks (2G/3G/4G) and 5G IoT LTE-M / NB-IoT networks. Our multi-operator SIM card solutions offer the best data/price ratio and a turnkey solution pre-configured by us (optional SIM card, please contact us).



### **Automatic synchronisation**

The data recorded in the tracker is automatically synchronised with the Capturs SaaS platform / mobile application. Off-network data is automatically sent back once the network is found.



### **Battery life**

From several months to several years depending on activities and GPS settings. An email / SMS is sent when the battery level becomes low.



### **Data export**

Positions and trajectories can be exported in .GPX format from the platform.



### **Size and weight**

39x26x77mm, 93g, IPX5, the tracker is The GPS tracker is light, elegant and easy to wear.



### **Alert button / Alerts**

The button is also an alert button that allows messages to be sent by e-mail and SMS. Automatic alerts (movement, geofencing, low battery...) can also be set up. See the Capturs SaaS datasheet for more information.



### **API**

Use the raw data sent by the Capturs tracker on a third party system (ERP, mapping system, CRM...) using the Capturs API.



### **Temperature / Altitude**

The tracker has a built-in temperature sensor and records all temperatures, useful for cold chain monitoring. Altitude is also provided using GPS.



### **IPX5 Water jet resistant**

IPX5: Protected against water spray from all directions.



### **No infrastructure required**

Capturs are «Long Range» trackers, i.e. they work everywhere, within the limits of coverage.



### **Typical use cases**

Workforce management, access control, sport, isolated people, etc.

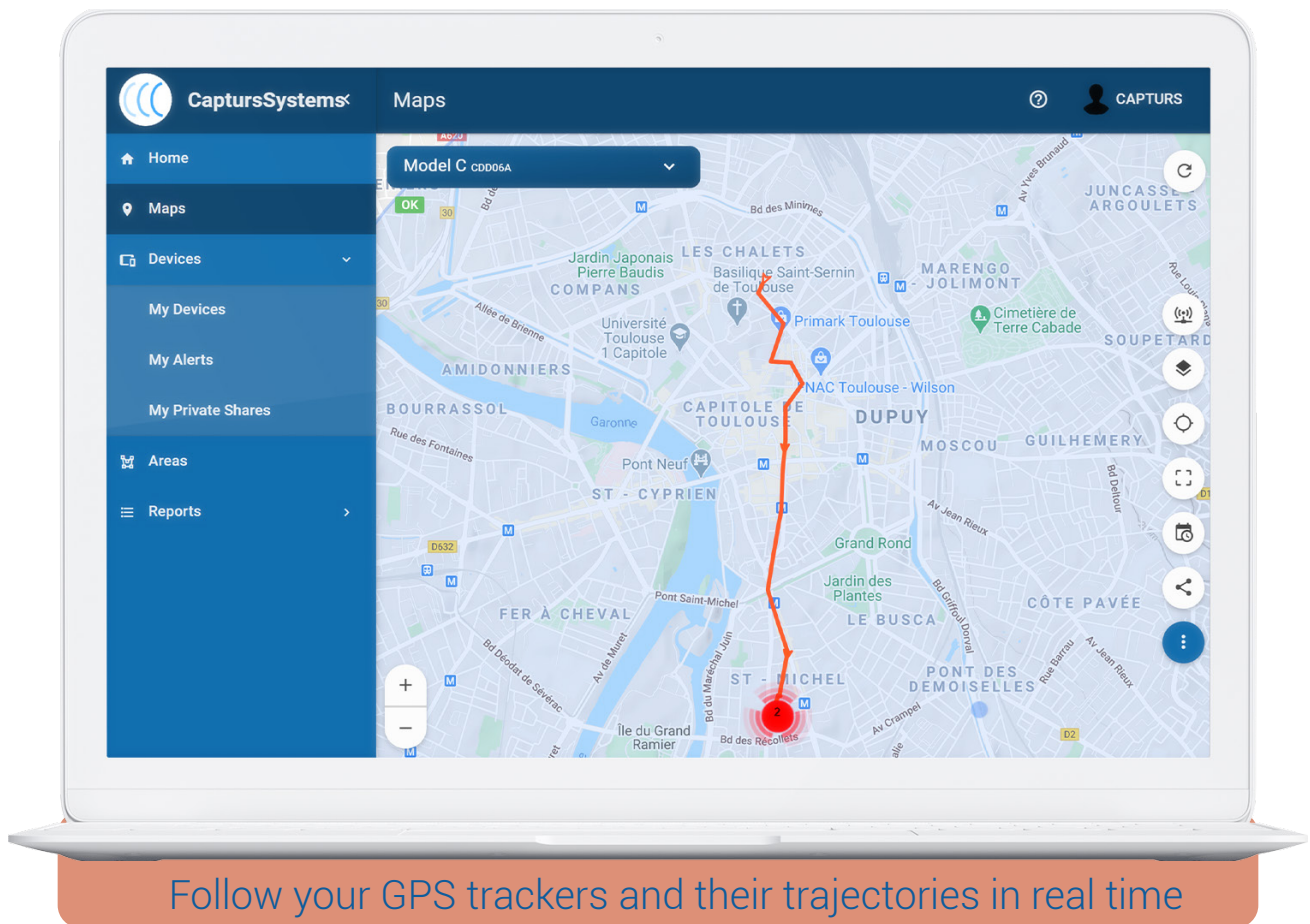
# Certifications

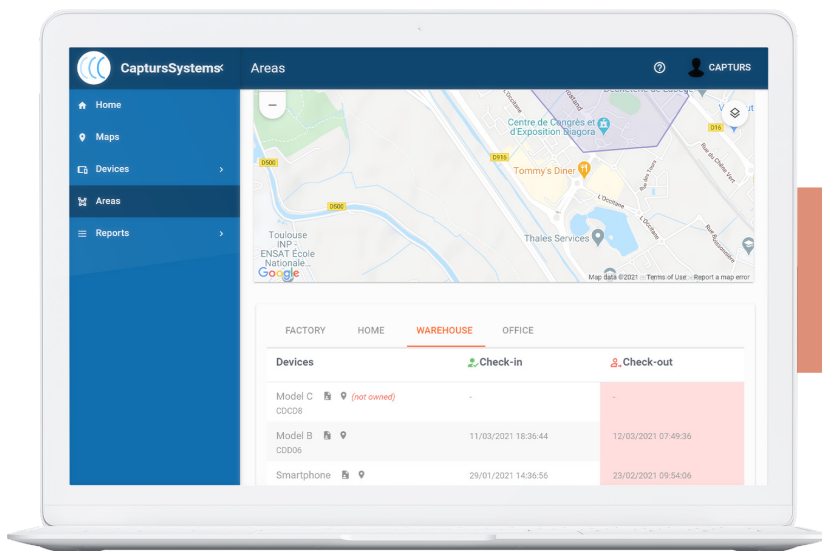
- Certifications**



# Online platform

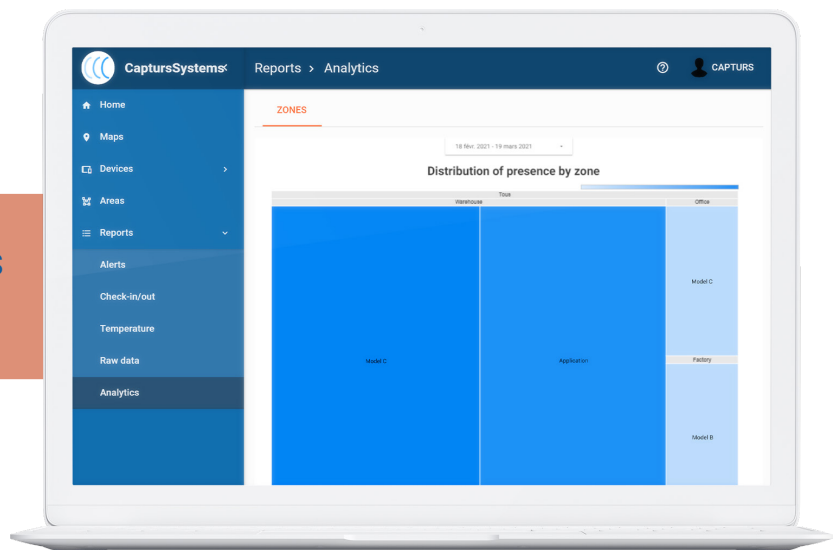
- Online platform





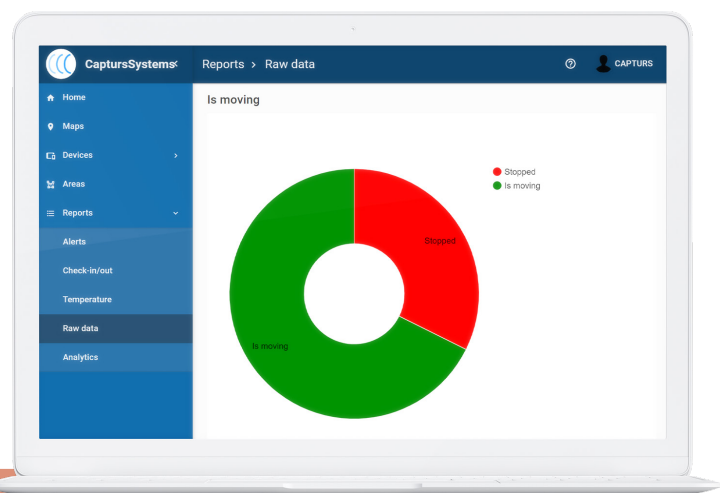
Smart geofencing system

Advanced dashboards and analytics



The screenshot shows the 'Reports > Raw data' dashboard. It features a table titled 'Raw data history' showing raw data for a specific device (Model B). The table includes columns for Date, Type, Is moving, Temperature, Battery charge, and GPS Position.

Date	Type	Is moving	Temperature	Battery charge	GPS Position
18/03/2021 17:37:00	position	■	23°C	70%	1.445033° 43.586574°
18/03/2021 17:38:14	position	■	23°C	70%	1.445582° 43.586981°
18/03/2021 17:31:33	position	▶	-	-	1.4452° 43.5867
18/03/2021 17:31:33	position	▶	-	-	1.4448° 43.5867



Customised reports and tables