

GPS / GSM Tracker

LTE-M / NB IoT / 2G / 3G / 4G

POWER

(((CAPTURS®



Technical Characteristics

• Technical characteristics

- Weight: 130g.
- Size: 135x65x15 mm.
- Power supply: vehicle battery.
- Waterproof and dustproof: IP67.
- Network: GSM / LTE Cat M1/NB1 / EDGE / GPRS / 2G Fallback (Multi-operator SIM card provided on request).
- Tracking frequency can be set remotely.
- Unlimited battery life: Operating Voltage 8V to 32V DC.
- Automatic synchronisation of recorded data with the Capturs cloud.
- NFC tag for identification - optional.
- Motion detection with a 6-axis accelerometer.
- Alerts: personalised alerts by email / SMS (movement, zones...).
- Configuration of alerts in batch from a CSV file.
- Export format: .GPX, .CSV.
- API: allows the raw data from the tracker to be used in a third party system.
- Plug & Play.

Features

• Features



GPS / Radio live tracking

Live positions are sent at the programmed frequency (from a few seconds to several hours). Track the trackers on the Capturs SaaS platform, on your computer or on your Android / iOS mobile application. Geolocation system: GPS + cellular radio triangulation.



Cellular GSM Network - LTE-M / NB IoT* / 2G / 3G / 4G

*LTE-M / NB IoT: depending on your operator's coverage

The best coverage in the world. The combination of GSM networks (2G/3G/4G) and 5G IoT LTE-M / NB-IoT networks. Our multi-operator SIM card solutions offer the best data/price ratio and a turnkey solution pre-configured by us (optional SIM card, please contact us).



Automatic synchronisation

The data recorded in the tracker is automatically synchronised with the Capturs SaaS platform / mobile application. Off-network data is automatically sent back once the network is found.









Battery life

The GPS tracker battery is powered by the vehicle/boat battery, which means that the battery is virtually unlimited. 200mAh NiMH backup battery allowing continuity of monitoring even in case of disconnection of the power supply (3 hours minimum battery life depending on GPS settings).



Data export

Positions and trajectories can be exported in .GPX format from the platform.

- **Size and weight**
135 x 65 x 15mm, 130g, IP67.
- **API**
Use the raw data sent by the Capturs tracker on a third party system (ERP, mapping system, CRM...) using the Capturs API.
- **Mounting options**
Connects directly to the + and - poles of the vehicle/boat battery. Quick and easy installation.
- **IP67 water, dust and weather resistant**
IEC60529 IP67: No dust ingress; full contact protection (dust tight). No water ingress when immersed to a depth of 1 metre for 30 minutes. UV-resistant and durable ASA material. Recommended for outdoor use.
- **No infrastructure required**
Capturs are «Long Range» trackers, i.e. they work everywhere, within the limits of coverage.
- **Typical use cases**
Vehicle fleet monitoring, monitoring of company and personal vehicles (anti-theft, workforce management, transport and logistics monitoring, etc.)

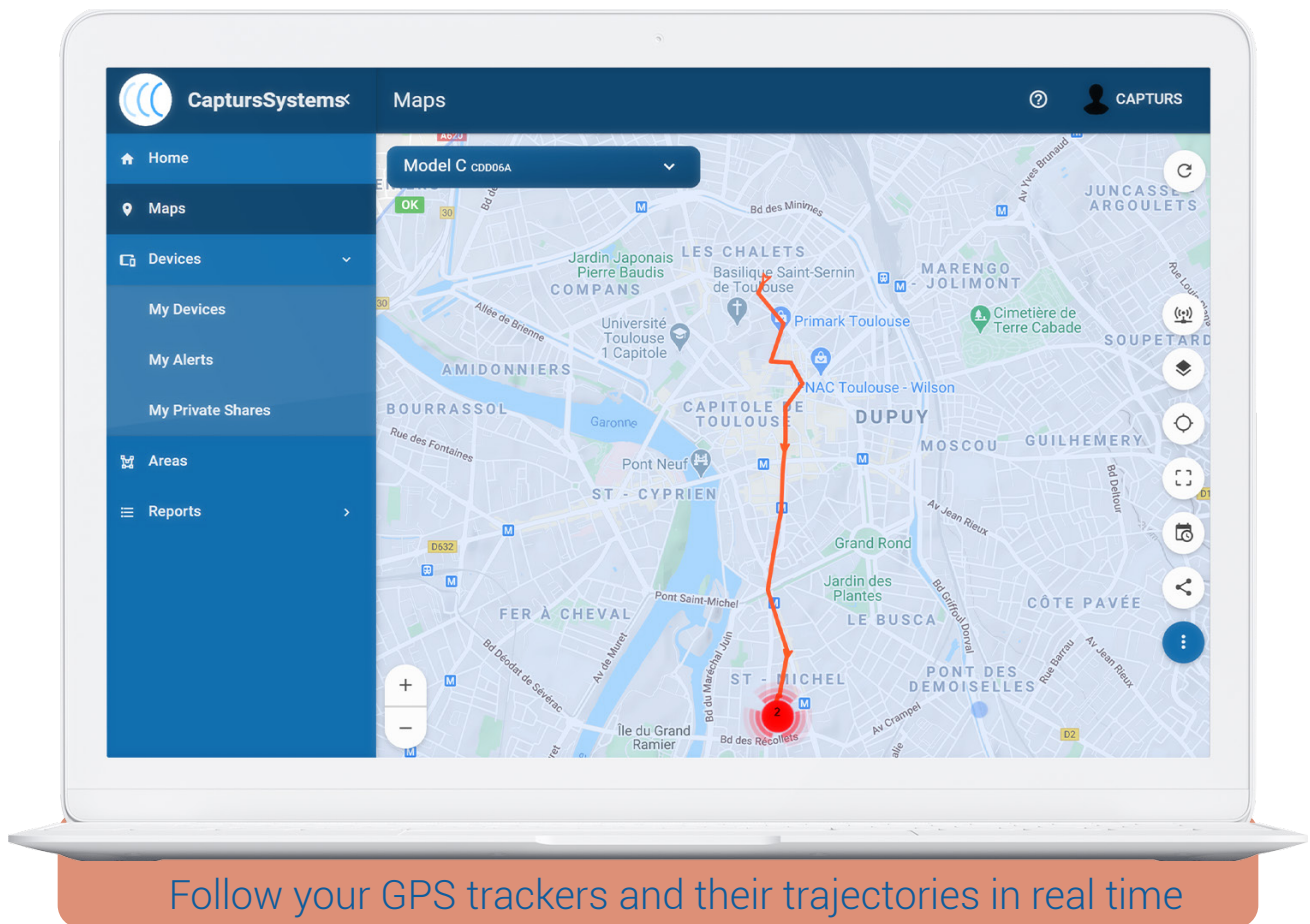
Certifications

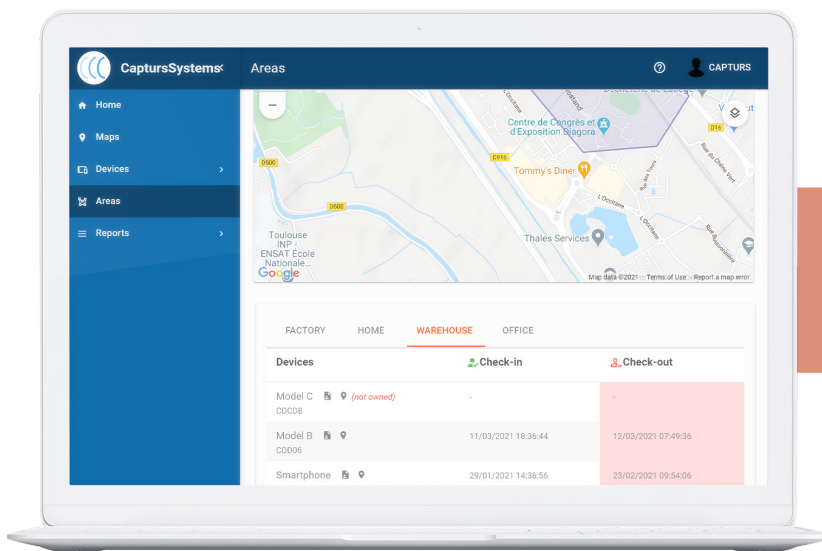
- Certifications**



Online platform

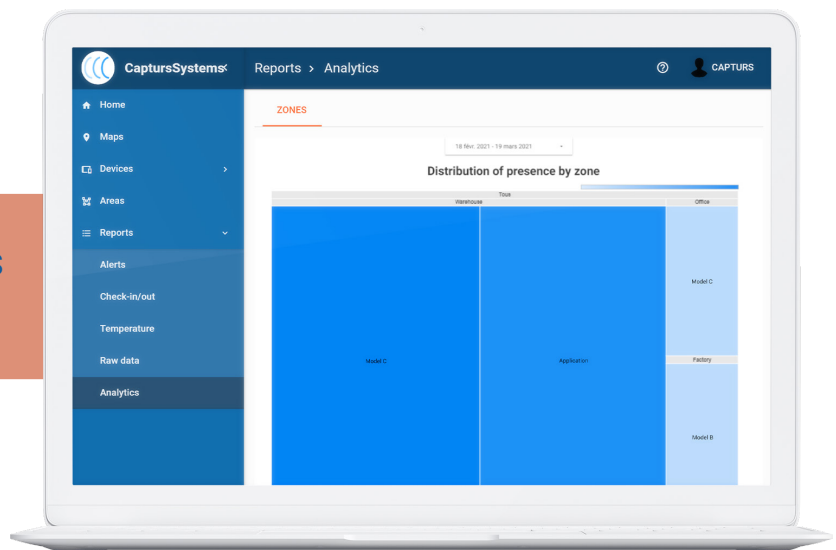
- Online platform





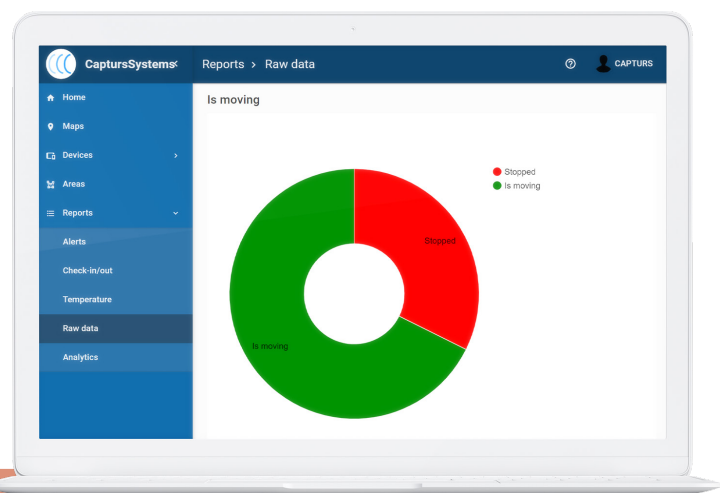
Smart geofencing system

Advanced dashboards and analytics



The screenshot shows the 'Reports > Raw data' dashboard. It displays a table of raw data history for a specific device (Model B). The table includes columns for Date, Type, Is moving, Temperature, Battery charge, and GPS Position.

Date	Type	Is moving	Temperature	Battery charge	GPS Position
18/03/2021 17:37:00	position	■	23°C	70%	1.445033° 43.586574°
18/03/2021 17:38:14	position	■	23°C	70%	1.445582° 43.586981°
18/03/2021 17:31:33	position	▶	-	-	1.4452° 43.5867
18/03/2021 17:31:33	position	▶	-	-	1.4448° 43.5867



Customised reports and tables